



12505 NW Cornell Road  
 Portland, Oregon 97229  
 Phone: 503.644.8001



**December 2006**

[www.villagegalleryarts.org](http://www.villagegalleryarts.org)

**Issue 12**

**Hours of Operation:**

**Tuesday to Saturday 10 am to 4 pm**

**Sunday 12 pm to 4 pm**

Lenall Siebenaler, <i>President</i>	503-892-8977
Phyllis Meyer, <i>First Vice President</i>	503-646-0916
Allen Greene, <i>Second Vice President</i>	503-646-9434
Melody Cleary, <i>Recording Sec.</i>	503-641-2481
Carolyn Rux, <i>Treasurer</i>	503-297-3435
Sharon Dunham, <i>Art Focus Newsletter</i>	503-524-7745
Judy Vatne, <i>Publicity</i>	503-297-1089
Ellen Jackson, <i>Cashier</i>	503-864-8132
Kalyani Pattani, <i>Docent Chair</i>	503-533-9027
Sandra Wood, <i>Desk Workers</i>	503-203-1359
Terri Gonzalez, <i>Class Scheduling</i>	503-531-0708
Buff Holtman, <i>Class Scheduling</i>	503-635-3625
Leslie Anderson, <i>Inside Show Chair</i>	503-977-2365
Edna Francisco, <i>Cards Chair</i>	510-367-4356
Sue Girard, <i>Membership Chair</i>	503-697-8257
Marlene Huntsinger, <i>Craft Chair</i>	503-297-8856
Mary Braund, <i>Website Administrator</i>	503-614-9067
Ken Findley, <i>Building Owner</i>	503-936-9796
Ryan Egge, <i>Building Owner</i>	503-201-9938

**Kathleen Scoggin**

I am inspired by scenes from nature particularly the Willamette Valley where I grew up. I enjoy painting in plein aire no matter where I may be and have created many small sketches and mini watercolors to always have reminders of wonderful places I have had the good fortune to visit. The images I paint represent the fun, beauty, and the closeness to nature I want to record and have with me always. My time as an artist has increased my awareness and heightened my appreciation for t h e o u t d o o r s .

I try to create an environment in my paintings that makes the viewer want to visit the scene. It is also fun to interpret the scene with vivid color, not always realistic to give even greater drama to the painting. I take great joy in the unpredictability of watercolor. We all hope for those happy accidents! I work with the paint and love the process of developing the painting through this give and take process. The style of my painting is dictated by the atmosphere of the scene on the particular day-loose light and happiness; crisper cools with harder edges, or the misty, rainy d a y s o f O r e g o n .

My art is created to help the viewer see and be aware of the electrifying beauty of nature but still create mystery. A successful painting will transport the viewer to another place and perhaps another time. My experience as a artist has allowed me to meet many wonderful people and be involved in a community full of creativity and always eager to share their knowledge with others.



**Original Watercolors  
 Kathleen Scoggin**  
  
[peppercreek@aol.com](mailto:peppercreek@aol.com)

<i>President's Letter/ VGA Membership Fees</i>	<b>2</b>
<i>Volunteer opportunities</i>	<b>3</b>
<i>Class and Workshop Schedule</i>	<b>4-5</b>
<i>Members on Display/ Inside Show</i>	<b>6</b>
<i>Artist Opportunities</i>	<b>7</b>
<i>Tip of the Month</i>	<b>8</b>
<i>Class Testimonials</i>	<b>9</b>



**Sign-up for 2007 "Featured Artist of the Month" is posted on bulletin board in the Gallery.**

**Featured Artist  
 December  
 Kathleen Scoggin**

### President's Message

I hope you are enjoying a great holiday season! Make it happen!

I'd like to invite you to stop by the gallery and see all the special crafts we have on display. You're sure to find a gift or two!

#### Big News!

I am happy to announce that the Gallery Board has voted to change our yearly dues to all be due each January starting in January 2008.

#### Why are we doing this?

Most organizations, like ours, do it this way. It will be far easier to manage and it will be less time consuming. This method will also make the jobs of the Membership Chairman, the Treasurer, the Cashiers and the Deskworkers so much easier on a monthly basis. A January due date allows us to keep a more consistent bank balance in our account to pay rising monthly expenses. In addition, it will be easier for our members to remember when their dues are up because all dues will be due in January. It will also make it easier to remind members that it's time to renew. Rest assured, our dues are staying the same price: Active/Associates Members: \$35.00, Participating Members: \$65.00. Also, starting in January, you will no longer be required to be a member to take our classes or workshops. We hope this will increase the number of participants.

#### Here's how it works:

Every member will need to pay their prorated 2007 dues by the end of their renewal month not 35.00. Please see the prorated chart below. For example, if my active membership dues are due in March, I will need to pay \$26.28 for the remaining months of 2007. Then in December of 2007, my 2008 dues will be \$35.00. Please refer to the Prorate chart and check to see how much you will owe in your renewal month. Beginning in 2008, all members will be renewing in the month of December.

#### Thank you!

The board appreciates your patience with this transition and thanks you in advance. There should only be confusion this first year! New members joining in 2007 will be charged full dues Jan-June and 1/2 dues July-Dec.

Please use the prorated schedule below and send a check for 2007 dues to the gallery, call for help if needed or stop by the gallery and a deskworker will help you to figure out what you owe. There will always be a prorated chart at the desk.

Lenall Siebenaler, President

#### MEMBER DUES FEE SCHEDULE FOR 2007!!!

Pay this amount if your membership renewal month is:

("renewal month" = paid through month)

		<u>Active/Assoc</u>	<u>Participating</u>
2006	Dec	35.00	65.00 (for 2007)
2007	Jan	32.12	59.62
	Feb	29.20	54.20
	Mar	26.28	48.78
	Apr	23.36	43.36
	May	20.44	37.94
	June	17.52	32.52
	July	14.60	27.10
	Aug	11.68	21.68
	Sept	8.76	16.26
	Oct	5.84	10.84
	Nov	2.92	5.42
	Dec	35.00	65.00 for 2008

Membership Chair asks that ANY questions be directed to Melody Cleary at 503-730-3182.

## VGA Volunteer Opportunities

### CALL TO ALL VGA MEMBERS!

The Nominating Committee (Britt McNamee and Phyllis Meyer) is making an appeal to all members of the Gallery. For 2007 (March to March) we are in need of a Treasurer and a First Vice President. Carolyn Rux has served for several years as Treasurer and has all the necessary information for the computer program. I believe it is not too time consuming and is very rewarding. The First Vice President helps the President. In this position, I have conducted meetings, headed the nominating committee, helped with the Business Plan, assisted in decorating for the Holiday Show - all very manageable and enjoyable.

The Gallery is an important part of many of our art lives offering great classes and an opportunity to show and sell (at the Gallery and in outside locations.) I hope you will consider this and decide to pay back the Gallery by offering your services for one of the open positions listed below. Being on the Board is fun and it helps you stay well informed. Anyone interested please call Britt McNamee (503) 645-8979 or Phyllis Meyer (503) 646-0916. You really are needed and your contribution will be greatly appreciated.

### Treasurer

This board position includes the following responsibilities: pay bills, pay artists and instructors. Receive and compile information from the cashier. Prepare and submit a monthly financial statement to the board. Maintain financial records. Prepare an annual report. Work with the accountant as needed to prepare tax statements. The VG uses Quicken Software to maintain the records. This position takes from 6 to 8 hours a month and qualifies for Active Member status. The position needs to be filled by March 2007.

For more information contact Carolyn Rux 503-297-3435.

She would like to begin training soon!

### Volunteer Coordinator

**THIS POSITION WOULD SATISFY ALL MONTHLY DESKSITTING REQUIREMENTS FOR AN ACTIVE MEMBER.**

**Available now!** We need one person to oversee this new position.

Responsibilities include coordinating and encouraging new and old members to get involved in the gallery.

Recruiting "non-artists" to volunteer from senior centers, churches, libraries, etc.

Call/email Lenall for more details. 503-892-8977 [lenall@lenall.com](mailto:lenall@lenall.com)

### Rental Coordinator

**THIS POSITION WOULD SATISFY ALL MONTHLY DESKSITTING REQUIREMENTS FOR AN ACTIVE MEMBER.**

**Available now!** We need one person to oversee this new position. Responsibilities include coordinating and scheduling the future rental of the gallery for outside classes and workshops, art parties, events, meetings of the Gallery.

Call/email Lenall for more details. 503-892-8977 [lenall@lenall.com](mailto:lenall@lenall.com)

### VGA Mailing Lists

The VGA needs an individual to help with the Gallery's email mailing lists and to help print out labels using an Excel spread sheet for the mailing of our monthly newsletters. It would involve very little time each month.

Call/email Lenall for more details. 503-892-8977 [lenall@lenall.com](mailto:lenall@lenall.com)

**Class Scheduling Chairpersons**

Terri Gonzalez	(503) 531-0708	tegonzoart@msn.com
Buff Holtman	(503) 635-3625	buffholtman@comcast.com

**CLASSES**

**\*\*\*\*NO CLASSES HELD DURING THE MONTH OF DECEMBER\*\*\*\***

(Non-Members: add \$20.00 to class tuition)

**Chris Keylock Williams - Watercolor**

Tuesdays starting January 2, 2007 (No class on Jan 23) 9:00 a.m. – noon and 1 p.m. - 4 p.m.  
 Cost: \$100 for 4 week session, dates TBA; supply list at registration

**Susan Cowan - Mixed Media**

Wednesdays starting January 3, 2007 (No class on Jan 24) 9:30 a.m.—12:30 p.m.  
 Cost: \$100, supply list at registration

**Terri Gonzales - Children's Art Class**

Every Monday 4:00—5:00 p.m. at Terri's Studio  
 Every Wednesday 4:30—5:30 p.m. at Village Gallery  
 Cost: \$10 per class payable for the month on the first class day of the month

**Student does not have to be a member of the gallery to enroll in Children's Art Classes**

**Peggy Clark - Watercolor for Fun**

Thursdays starting January 4, 2007 (No class on Jan 25) 10:00 a.m.—1:00 p.m.  
 and Friday, January 26, 2007  
 Cost: \$75 for the 3 week session; \$90 for non-members

**Beverley Drew Kindley—Acrylics....Beginning to Potential**

Mondays, January 8 – February 26, 2007  
 Cost: \$100 per 4 week session; supply list at registration

**Jill Goodell - Five-Week Drawing Classes**

Wednesday, January 10—February 14, 2007 1:00—3:30 p.m.  
(No class Jan 24)  
 \$95 (with \$15 lab fee paid to instructor; fee includes handbook and supplies used in class)

## WORKSHOPS

(Students do NOT need to be members of Village Gallery of Arts)

### JANUARY & FEBRUARY 2007

## Jill Goodell Workshops

### Drawing and Design Workshop

Friday, January 19, 2007

6:30 p.m. - 9:00 p.m.

and

Saturday, January 20, 2007

9:30 a.m. - 3:30 p.m.

(Bag lunch recommended)

\$85 (with \$15 lab fee paid to instructor; fee includes handbook and supplies used in class)

### One-Day Travel Sketching with Pen, Ink & Wash Workshop

Saturday, February 3, 2007

9:30 a.m. - 3:30 p.m.

(Bag lunch recommended)

\$60 (with \$15 lab fee paid to instructor; fee includes handbook and supplies used in class)

### Working with Pastels Workshop

Friday, February 16, 2007

6:30 p.m. - 9:00 p.m.

and

Saturday, February 17, 2007

9:30 a.m. - 3:30 p.m.

(Bag lunch recommended)

\$85 (with \$15 lab fee paid to instructor; fee includes handbook and supplies used in class)

## Eric Weigardt Workshop

### Watercolor Workshop

January 23, 24 and 25, 2007

9:00a.m.—4:00 p.m. (Lunch Break from noon until 1 p.m.)

Cost: \$375, supply list at registration

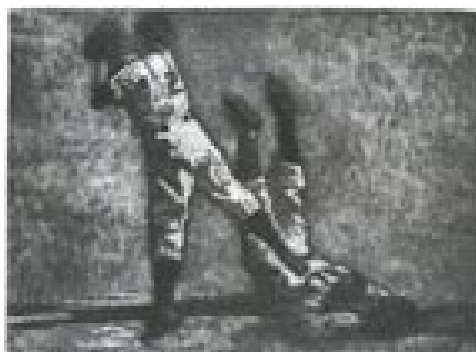


## VGA MEMBERS ON DISPLAY!



### SHOW ACCEPTANCES/ARTISTS' SOCIETIES/AWARDS

**Leslie Anderson** has been selected as one of 44 print-makers featured in the 13th biennial Pacific Prints 2006 exhibition at the Pacific Art League in Palo Alto, California, presented October 4 through November 23, 2006. "Yankees & Dodgers 1941" is one of a series of baseball players created in line etching and aquatint. This work and others show a variety of print-making techniques such as monotype, linocut, drypoint, woodcut, cast acrylic, soft ground and others and may be viewed at <http://www.pacificartleague.org>.



"Rolfe Owen"  
line etching and aquatint  
By Leslie Anderson

## Have an item for the Art Focus?

Send items for the monthly VGA newsletter to  
Sharon Dunham at  
[dunhamsw@verizon.net](mailto:dunhamsw@verizon.net)

**Deadline:**  
**by the 10th of the month**

### VGA INSIDE SHOW SCHEDULE

January		People, Places & Things
February		Light & Dark
March	(juried)	Textures
April		Culture Cornucopia
May		At Play
June		Summer Themes
July		Rhythm & Movement
August		Reflections
September		Colors of the World
October	(juried)	Anything Goes
November & December		Celebration

Two juried shows are scheduled for 2007. In March the theme is "Textures" and in October the theme is "Anything Goes." Prizes will be awarded to First (\$50), Second (\$30) and Third (\$20), plus three Honorable Mentions. Each piece of art (limit of three) is charged \$10 and must follow Inside Show submittal requirements.

There is a fee of \$10 per piece for JURIED shows. When the fee is paid, pick up a sticker from the Desk Worker to be placed on each submission slip of each piece of artwork.

**Membership: Active (A) Participating (P) Associate (AS)**

### Featured Artist of the Month

The Featured Artist is welcome to promote his or her show with flyers, postcards or other news items to encourage friends, family and others to visit the gallery.

If the artist would like to host a reception, he or she can reserve a time when the gallery is not otherwise occupied with a class. The artist is responsible for promoting the event, providing any refreshments and tidying up after the event.

Each month, the Art Focus newsletter presents an article about the Featured Artist. The artist is responsible for submitting the information with pictures of the artist and a work of art.

### CALL TO ARTISTS

The Village Gallery's first Outside Show of the New Year will be at Beaverton's City Hall January 2 through 30, 2007. If you would like to participate please bring wall art to the gallery by December 30, 2006. Artists will be able to submit 1 large or 2 medium or small pieces.

Craft artists wishing to display work should contact Marlene Huntsinger, Craft Chairperson, as there will be some pedestals available from January 2 through January 23.

We had several sales at our last show there! Lets show our best work!

### CALL TO ARTISTS! The holidays are coming!

The holidays are a special time for you to showcase your art. Traffic to the gallery increases as people look for something special for family and friends. Holiday-themed art and crafts are welcome as well as artwork that can be enjoyed anytime during the year. Last year, we had great sales on beautiful handmade ornaments - great for gift giving to friends and family.

Remember that art and crafts will be on display for two months - beginning the first weekend in November and running through the end of December. Feel free to bring additional artwork throughout the two months, particularly if your pieces are selling and can be replaced.

## Art Chitchat

By Emma Achleithner

#2 in a series

### Choosing a Subject

Occasionally I have come across an artist who had trouble finding a subject to paint. Fortunately most of us have a long list of ideas and are impatiently waiting to find time to implement them. It is a good idea for students who are just starting out to paint subjects they are familiar with. Who is bound to paint florals more true to their character than one who is intimately familiar with garden flora? I don't think I could adequately capture the flavor of a Paris street scene, never having been there. As we mature in our painterly skill, we automatically venture into untested territory, leaving the boundaries of our comfort zone. These steps are necessary if we want to grow professionally. We never know where our hidden talents may hang out.

I have always been in awe of waterfalls. When I willed myself to paint one I found the process truly challenging. I looked at the force of water crashing to the ground where it ricocheted to rise up into ethereal mist and surrounding the whole area with a mystical aura as delicate as anything you can imagine. How do you even begin to paint something like this? I made numerous color sketches, trying to come up with a technique that would enable me to produce, in watercolor, some attractive semblance of the desired mood. I was hooked.

Some subjects are more difficult to paint than others. Among the really elusive images are water, clouds, reflections, rain, things that are atmospheric rather than stark logic. I make it a point to greatly study up on a subject that I am not completely familiar with before I start to paint in earnest. Commissions can often catch you off guard. Odd requests can get you scrambling for research sources. Never begrudge the hours you spend on preparation for a painting. The satisfaction of an honest effort is good for your soul.

A good start for beginning students might be to choose a subject that requires the application of washes. With pencil, divide the paper into five unequal horizontal stratas. Sky (blue), mountain peaks (gray-blue), hilly mountains (purple), a body of water (deep blue), and a strip of land up front (golden yellow). Give each layer a crisp, clear wash. Let each dry before proceeding to the next. The color choice can be an early morning muted scenario or the rich deep color scheme of dusk. Washes are difficult to paint even for an experienced artist. A moment of distraction can invite those pesky rosettes formed by the pigment's sediments. These rosettes or blooms can be a lovely surprise in many instances, not so in uniform washes. Applying washes with confidence is a fundamental skill every watercolorist needs to have up his/her sleeve.

Talk to you next month.

emmaach@comcast.net

## What VGA Members Are Saying About Classes!

### Ken Walker Workshop Testimonials

Ken Walker's hot stamped foil workshop was so much [fun!](#) I've never taken a workshop where the time flew by as [quickly!](#) Ken is a wonderful instructor and we were 'hands on' almost immediately. The workshop was well organized but relaxed. Ken was more than generous with his knowledge as well as his foil supplies. We all came away from the workshop with a number of our own work samples and a supply of foils to work with on our own. Hot foil stamping is an easy process, and the results lend themselves to all kinds of artful uses.

-Nikki Dilbeck

Ken Walker's foil stamped workshop was an amazing new way of making art. It is fun and opens the imagination to endless possibilities. It is an interesting procedure and Ken was there at every turn to help and guide us. He provided all materials and equipment and materials to take home to work with besides. We all had gorgeous samples of the process to take home. I recommend his workshop to any artist interested in a new way of making art.

-Madeline James

The workshop conducted by Ken Walker on Friday, October 13<sup>th</sup>, was a blast! Ken is clear in his instruction and excited to have each participant succeed. He was open to questions and ideas and experiments. He provided all the equipment needed and gave instructions on how and where to order supplies. Hot stamp foiling is another technique that can be used independently or incorporated with other processes. It works well on both paper and canvas, but with paper, the artist has more control in the beginning. With practice the technique will enhance art on canvas. This is a highly recommended workshop!

-Buff Holtman



12505 NW Cornell Rd., Portland, Oregon 97229  
Phone: 503.644.8001

Non-Profit Org.  
U.S. Postage  
PAID  
Permit No. 54



## Art Focus Newsletter Submission

**Name/phone number of person submitting information:**

**Item (class, bio, show/event, etc.):**

**Date(s)/Time(s) of class or event:**

**Briefly describe what you would like to submit:**

**Deadline: by the 10th of the month**

**Email items to Sharon Dunham at [dunhamsw@verizon.net](mailto:dunhamsw@verizon.net)**